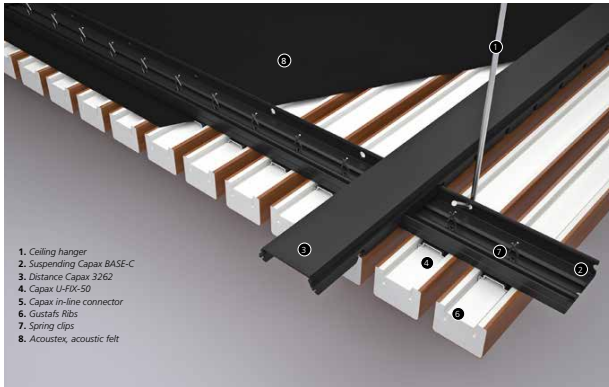


woodCLADDING > Linear Rib

CL-WD-GLR



- 1. Ceiling hanger
- 2. Suspending Capax BASE-C
- 3. Distance Capax 3262
- 4. Capax U-FIX-50
- 5. Capax in-line connector
- 6. Gustafs Ribs
- 7. Spring clips
- 8. Acoustex, acoustic felt

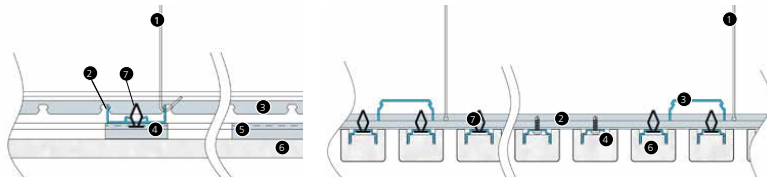
CEILING ASSEMBLY



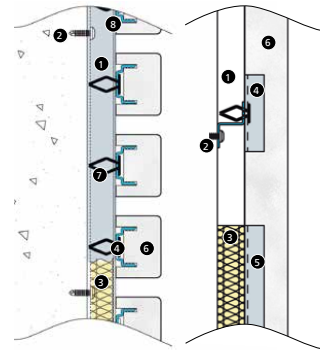
- 1. Capax BASE-W
- 2. Wall fixing screw
- 3. Air gap or insulation
- 4. Capax U-FIX
- 5. Capax in-line connector
- 6. Gustafs Ribs
- 7. Spring clips
- 8. Acoustex, acoustic felt

The installation is made with screws or, for demountable ribs, spring clips.

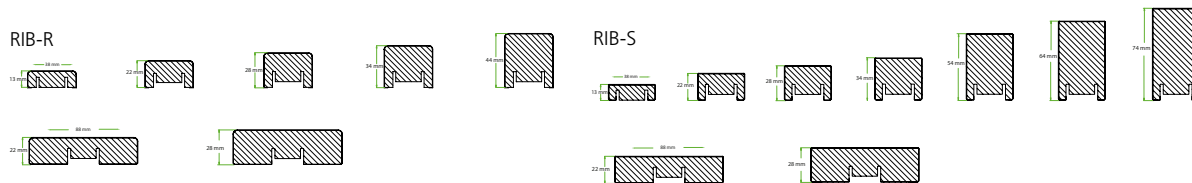
WALL ASSEMBLY



TYPICAL DETAILS @ CEILING (VERT. SECT.)



TYPICAL DETAILS @ WALL (VERT. SECT.)



RIB SIZE OPTIONS

Specifications

woodWALLCLAD > Linear Rib

The Linear Rib system offers a sophisticated, high quality solutions that is not only easy to assemble and install but also features excellent acoustic and fire rating performance.

APPLICATIONS —

Auditoriums, schools, conference rooms, concert halls, offices, hospitals

MATERIAL —

-CORE: Fibre reinforced gypsum or sandwich
-SURFACE: Veneer, painted in solid colors or foils

HARDWARE —

-Capax Aluminum mounting system with wall/ ceiling cleats
-Standard spacing yields 1/2" gap between ribs

RIB WIDTH (OVERALL RANGE) —

1-1/2" [38mm] to 3-7/16" [88mm]
*Standard Increments

RIB LENGTH/HEIGHT (OVERALL MAX.) —

94-7/16" [2400mm]

RIB THICKNESS —

1/2" [13mm] to 2-15/16" [74mm]

FIRE CLASS —

-B-s1, d0 or A2-s1, d0

MOUNTING OPTIONS —

-Capax frame and cleat system

ACOUSTICS —

-Up to sound absorption class A

WARRANTY —

1 Year Limited Warranty

Specification Code: **CL-WD-GLR**

CL	WD	GLR
LINE	TYPE	MODEL/ID